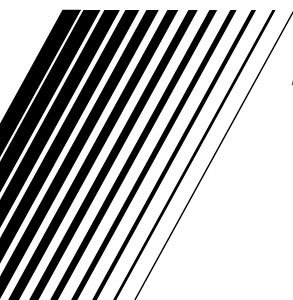


JVC



JLIP CAPTURE PACK

BEFORE OPERATION



INSTRUCTIONS

IMPORTANT**TO CUSTOMERS:****MAKE SURE TO READ THIS CAREFULLY BEFORE OPENING THE SEALED SOFTWARE PACKETS**

Thank you for purchasing our product. In order to start using the software programme enclosed, you are required to accept the terms and conditions of the agreement as provided below.

Software Licence Agreement

This is a legal agreement between you (either an individual or an entity) and Victor Company of Japan, Limited (JVC). By opening the sealed software packages and/or by using the Programme, you are agreeing to be bound by the terms of this Agreement. Should you not agree to the terms hereof, return the unopened software packets and the accompanying items to the place where you obtained them.

1. GRANT OF LICENCE

This Licence Agreement (Agreement) permits you to use the software programme (Programme) enclosed in this package and/or the accompanying written material (e. g. printed manuals). Although you are also granted licence to load the Programme into temporary memory (i. e. RAM) or install the Programme once into permanent memory (e. g. hard disk, CD-R, or other storage device) of one (1) computer system, you are strictly prohibited to install the Programme on a network server for the sole purpose of internal distribution.

2. COPYRIGHT

Notwithstanding the provision of Article 1 hereof, any copyright in the Programme is owned exclusively by JVC and is protected by the Japanese copyright law, copyright laws of other countries, as applicable, and relevant provisions under international treaties including the Berne Convention for the Protection of Literary and Artistic Works, as amended, and the Universal Copyright Convention, as amended. Therefore, you must treat the Programme like any other copyrighted material except that you may either (a) make one (1) copy of the Programme solely for your personal backup or archival purposes, or (b) transfer the Programme to a single hard disk, provided that you keep the original solely for your personal backup or archival purposes.

3. RESTRICTION ON THE PROGRAMME

You may not reverse engineer, decompile, disassemble, revise or modify the Programme, except to the extent that such restriction is expressly prohibited by applicable law. JVC and its distributors and dealers shall not be liable for any claims or defects etc. arising out of or in connection with such prohibited activities as indicated in this Agreement.

4. OTHER RESTRICTIONS

You may not rent, lease or transfer the Programme to any third party nor let such a party use the Programme.

5. LIMITED WARRANTY

JVC warrants that any media in which the Programme is embodied (e.g. floppy discs, CD-ROM, etc.) are free from any defects in materials and workmanship for a period of thirty (30) days from the date of your purchase and that any hardware accompanying the Programme is also free from defects to the extent provided in the attached Warranty Form. JVC's entire liability and your exclusive remedy in connection with the Programme shall be, at JVC's option, either (a) return of the price paid, or (b) replacement of defective Programme media.

6. DISCLAIMER OF WARRANTIES

EXCEPT FOR THE EXPRESS WARRANTIES STATED HEREIN AND TO THE EXTENT PERMITTED BY APPLICABLE LAW, JVC AND ITS SUPPLIERS DISCLAIM ANY OTHER WARRANTIES, EITHER EXPRESS OR IMPLIED, INCLUDING BUT NOT LIMITED TO IMPLIED WARRANTIES OF MERCHANTABILITY AND FITNESS FOR A PARTICULAR PURPOSE IN REGARD TO THE PROGRAMME AND THE ACCOMPANYING PRINTED MATERIALS.

7. LIMITED LIABILITY

TO THE EXTENT PERMITTED BY APPLICABLE LAW, IN NO EVENT SHALL JVC AND ITS SUPPLIERS BE LIABLE FOR ANY INDIRECT, SPECIAL, INCIDENTAL OR CONSEQUENTIAL DAMAGES WHATSOEVER, REGARDLESS OF THE FORM OF ACTION WHETHER IN CONTRACT, TORT, STRICT PRODUCT LIABILITY OR OTHERWISE (INCLUDING BUT NOT LIMITED TO DAMAGES FOR LOSS OF PROFITS, BUSINESS INTERRUPTION, LOSS OF BUSINESS INFORMATION OR ANY OTHER PECUNIARY LOSS) ARISING OUT OF OR IN CONNECTION WITH THE USE OF OR INABILITY TO USE THE PROGRAMME, EVEN IF JVC HAS BEEN ADVISED OF THE POSSIBILITY OF SUCH DAMAGES.

Victor Company of Japan, Limited

MAJOR FEATURES	5 – 6
GETTING STARTED	7
Operating Environment	7
INSTALLATION	8 – 9
JLIP Video Capture	8
JLIP Video Producer	8
Adobe® Acrobat® Reader 3.0	8
Mr. Photo Gold	9
CONNECTIONS	10 – 11
Presto! Mr. Photo Gold	13 – 19
TECHNICAL SUPPORT FOR REGISTERED USERS	20 – 21
NOTICE FOR USERS	21

NOTE:

The JLIP Video Capture/Producer instruction manual is also included on the CD-ROM in PDF format. To open, double-click the file in the desired language. Note that Adobe® Acrobat® Reader must be installed to read PDF files.

CAUTION:

- Operate this equipment according to the operating procedures described in this manual.
- Use only the provided CD-ROM. Never use any other CD-ROM to run this software.
- Do not attempt to modify this software.
- Changes or modifications not approved by JVC could void user's authority to operate the equipment.

How to handle a CD-ROM

- Take care not to soil or scratch the mirror surface (opposite to the printed surface). Do not write anything or put a sticker on either the front or back surface. If the CD-ROM gets dirty, gently wipe it with a soft cloth outward from the centre hole using a circular motion.
- Do not use conventional disc cleaners or cleaning spray.
- Do not bend the CD-ROM or touch its mirror surface.
- Do not store your CD-ROM in a dusty, hot or humid environment. Keep it away from direct sunlight.

- The Readme.TXT file provides additional information for setup and information that is not included in the instruction manual. Please read the file before installing the provided software programme.
- You can find the latest information (in English) on the provided software programme at our world wide web server at <http://www.jvc-victor.co.jp>.

Two software programmes are provided.

JLIP Video Capture

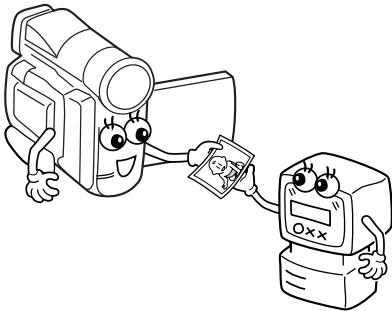
Video Capture Facility

Video images from a video camera can be captured as still images with 16.77 million colours through the serial port (RS-232C) of a Windows®-operated computer.

JLIP Control Facility

With a JLIP compatible video camera,

- all basic video operations can be executed via the computer display;
- up to 99 images can be captured automatically with Programme Video Capture (playing tape — scanning — transferring to PC).



JLIP Video Producer

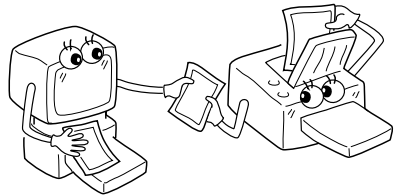
JLIP Control Facility

With a JLIP-compatible video camera,

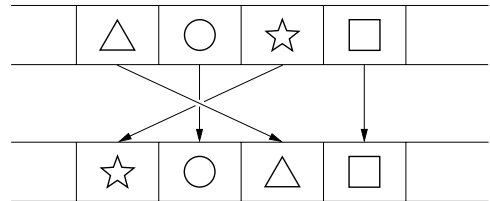
- all basic video operations can be executed on the computer display;
- programmed video playback (up to 99 programmes) or assemble editing can be performed.

Assemble Editing

Selected scenes on a pre-recorded tape can be edited in a specified sequence.



Pre-recorded tape
(on video camera)

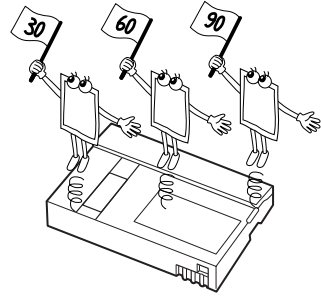


Recording tape
(on VCR)

Advanced Applications

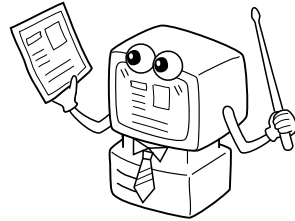
Create title indexes for your video collection

Title index images can be captured from your favorite recordings using the Interval Capture mode. Print the captured index images on your PC printer using the computer's Print Screen facility, then attach them to your cassettes.



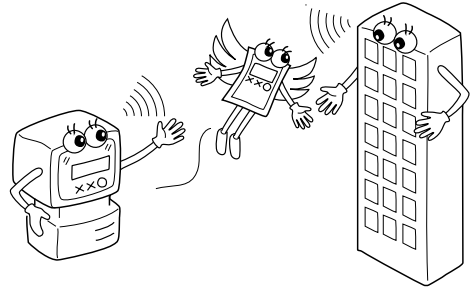
Business presentations

Images captured from video can be incorporated into business documents to spice up your presentations.



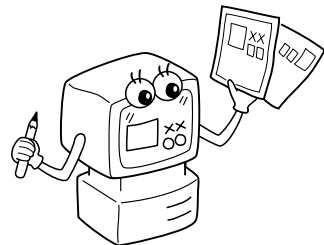
Internet homepage

Images captured from video can be incorporated in your Internet homepage using image editing software.



Video journal and postcards

Create your own original postcards, party invitation cards and the like or keep a video journal.



Operating Environment

- Personal Computer with Microsoft® Windows® 95/Windows® 98
- CPU: Intel® Pentium® or better processor
- Minimum RAM requirement: 32 MB
- Available Hard Disk space of at least 10 MB for JVC Software
Recommended 140 MB for Presto! Mr. Photo Gold
(You can select which applications from Mr. Photo Gold you wish to install.)
- Colour display capable of at least 640 x 480 pixels, 256 colours
Recommended 1024 x 768 pixels, 16.77 million colours
- 1 free serial transmission port, compatible with 9600 bps or higher transmission rate, connectable to RS-232C with 9 pin serial connector
(Recommended compatible with UART 16550A)
- Mouse (Windows® compatible)
- CD-ROM drive

NOTE:

An optional 9 pin serial conversion adapter is required for computers using a serial communication port other than a standard 9 pin.

- * The system requirements information above is not a guarantee that the provided software will work on all personal computers meeting those requirements.
- * Microsoft® and Windows® are either registered trademarks or trademarks of Microsoft Corporation in the United States and/or other countries.
- * **JLIP** is a registered trademark of JVC.
JLIP stands for Joint Level Interface Protocol, a new communication protocol which allows AV units equipped with a JLIP terminal to be controlled by a personal computer.
- * Other product and company names included in this instruction manual are trademarks and/or registered trademarks of their respective holders.

INSTALLATION

Refer to the Windows® 95/98 manual or your computer's manual for details on basic Windows® 95/98 operating procedures.

Installing JLIP Video Capture

1. Start up Windows®.
 - Close any other applications that are running.
Make sure that there are no icons of other applications on the task bar.
2. Insert the CD-ROM into the CD-ROM drive.
Click **Start** on the task bar — **Run**.
3. Click **Browse** — CD-ROM icon in the **Look in:** column.
4. Double-click the **JVC** folder.
5. Double-click the **Jcpt** folder.
6. Double-click the **Setup.exe** icon.
7. Click **OK**.

The set-up programme will load. Follow the instructions that appear on the screen.

Installing JLIP Video Producer

1. Start up Windows®.
 - Close any other applications that are running.
Make sure that there are no icons of other applications on the task bar.
2. Insert the CD-ROM into the CD-ROM drive.
Click **Start** on the task bar — **Run**.
3. Click **Browse** — CD-ROM icon in the **Look in:** column.
4. Double-click the **JVC** folder.
5. Double-click the **Vdpro** folder.
6. Double-click the **Setup.exe** icon.
7. Click **OK**.

The set-up programme will load. Follow the instructions that appear on the screen.

Installing Adobe® Acrobat® Reader 3.0

1. Start up Windows®.
 - Close any other applications that are running.
Make sure that there are no icons of other applications on the task bar.
2. Insert the CD-ROM into the CD-ROM drive.
Click **Start** on the task bar — **Run**.
3. Click **Browse** — CD-ROM icon in the **Look in:** column.
4. Double-click the **Reader** folder.
5. Double-click the **Setup.exe** icon.
6. Click **OK**.

The set-up programme will load. Follow the instructions that appear on the screen.

NOTES:

- Close any other programmes running on the PC.
- Disable programmes that operate in the background, such as screen savers, e-mail and communication software, virus checkers, schedulers, etc.
- Turn off file and printer sharing.

INSTALLATION

Refer to the Windows® 95/98 manual or your computer's manual for details on basic Windows® 95/98 operating procedures.

Installing NewSoft Presto! Mr. Photo/PhotoAlbum/ImageFolio

1. Start up Windows®.
 - Close any other applications that are running.
Make sure that there are no icons of other applications on the task bar.
 2. Insert the CD-ROM into the CD-ROM drive.
Click **Start** on the task bar — **Settings** — **Control Panel**.
 3. Double-click **Add/Remove Programs**.
Click **Install** — **Next** — **Browse** — **CD-ROM** icon in the **Look in:** column.
 4. Double-click the **NewSoft** folder.
 5. Double-click **Setup.exe**.
 6. Click **Finish**.
 - Once the installation programme loads, follow the instructions displayed on your screen.
 7. Click **Install** in the **Language Selection** window.
 - The installation programme will automatically detect the language being used in the version of Windows® you are running.
 8. Click **Next>** in the **Select Components** window.
 - Click the check box to deselect any software you do not wish to install.
- The set-up programme will load. Follow the instructions that appear on the screen.

STARTING UP JLIP Video Capture/Producer AND Presto! Mr. Photo/PhotoAlbum/ImageFolio

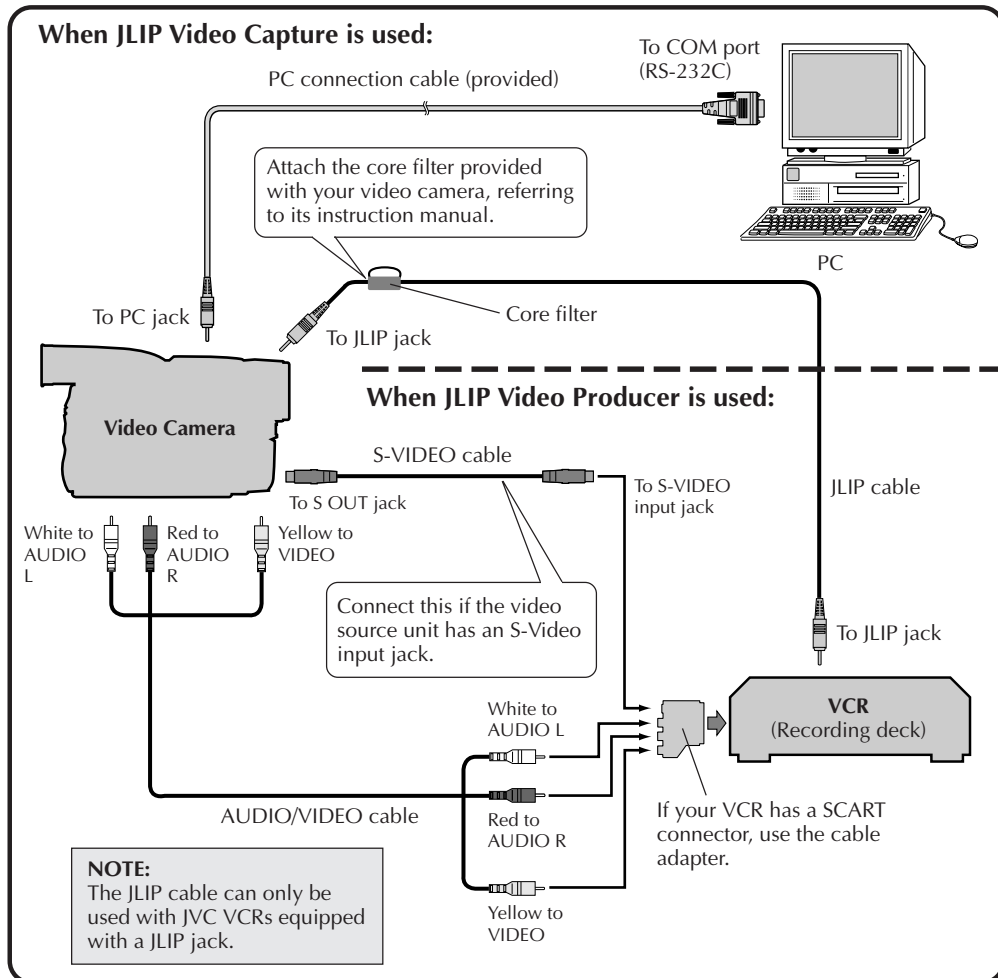
1. Start up Windows®.
2. Click the **Start** button on the task bar.
 - The **Program** menu appears on the screen.
3. Move the mouse pointer over the programme entry you want to run and click to start the programme.
 - The software you selected in step 3 starts up.

HOW TO CLOSE THE PROGRAMME

Click the Close button or select **File** — **Exit**.

- To assure safety, make sure all units are turned off before making any connections.
- We recommend that you use the AC Power Adapter/Charger.
- When connecting a cable with a core filter attached, be sure to plug the connector equipped with the core filter into the video camera.
- Do not make any connections to the video camera's DV OUT connector.

WHEN CONNECTED TO A VCR EQUIPPED WITH A JLIP JACK



NOTE:

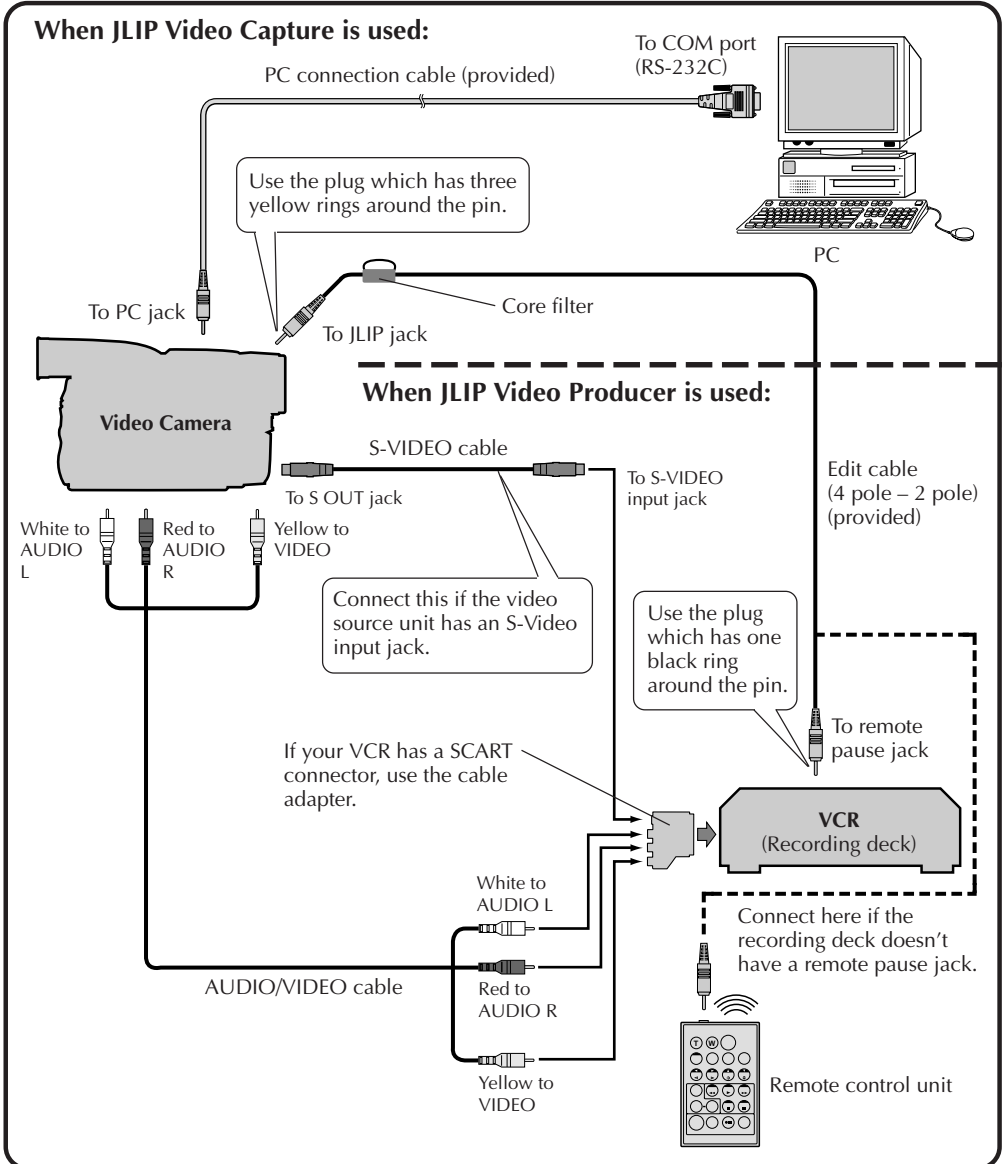
The JLIP cable is optional. Be sure to use the following:

- JLIP cable: PEAC0453

Consult your nearest JVC Technical Support Centre for details about availability (see page 20).

WHEN CONNECTED TO A VCR NOT EQUIPPED WITH A JLIP JACK

When using a VCR not equipped with a JLIP jack, set your VCR brand using the remote control unit, then perform editing using the remote control.





Mr. Photo Gold:

Presto! Mr. Photo
Presto! PhotoAlbum
Presto! ImageFolio

For Windows

* Please consult your nearest NewSoft service centre for technical support. (see next page)

NewSoft international service centre:

U.S.A: 4113 Clipper Court, Fremont, CA 94538, USA
Tel: (1) 510-445-8600 Fax: (1) 510-445-8601
Technical Support Hot Line: (1) 510-445-8616
E-mail: tech@newsoftinc.com
<http://www.newsoftinc.com>

Taiwan: 9F, No. 68, Sec. 3, Nan-king E. Rd., Taipei, Taiwan, R.O.C.
Tel: (886) 2-2517-0750 Fax: (886) 2-2517-0760
Technical Support Hot Line: (886) 2-2517-0952
E-mail: support@newsoft.com.tw
<http://www.newsoft.com.tw>

Japan: 6-21-3 Shinbashi Minato-Ku, Tokyo 105-0004 Japan
Tel: (81) 3-5472-7008 Fax: (81) 3-5472-7009
E-mail: support@newsoft.co.jp
<http://www.newsoft.co.jp>

U.K.: The Software Centre, East Way,
East Mill Industrial Estate, Ivybridge
Devon, PL21 9PE, United Kingdom
Tel: (44) 01752-201148 Fax: (44) 01752-894833

France: Info Trade Centre
d'activités de l'Ourcq 45,
rue Delizy 93692 Pantin France
Tel: (33) 1-4810-7563 Fax: (33) 1-4810-7555
E-mail: infotrad@club-internet.fr

* (): Country code

Mr. Photo stores and catalogues all of your valuable photos. You can sort photos and film “rolls” by date and title, or search by keyword, date, and other image properties. Then drag-and-drop photos to the Application Bar to create photo masterpieces using ready-made templates or design electronic photo albums. Click the Slide Show icon to view selected photos in a “roll” of film, or drag-and-drop a photo to the E-mail icon to send it to family and friends.

Features

- Acquire photos from digital cameras, scanners, floppy disks, PhotoCDs, and the Internet.
- Catalogue photos in “rolls” of film that you can customize and rearrange.
- Enhance photos instantly (remove red-eye, adjust brightness/contrast, blur/sharpen).
- Drag-and-drop photos to print, e-mail, create HTML slide shows, or post on the Internet.
- Drag-and-drop photos to other applications for further editing or creative projects.
- Save photos as a screen saver or as wallpaper.
- Print stickers, labels, and photo catalogues.

System Requirements

- Digital Camera plus digital camera software.
- Scanner, if you intend to scan photos.
- A PC with at least a 486 microprocessor (a Pentium processor is recommended) and 16 MB RAM.
- Recommend at least 30 MB of hard disk space available after installation. Mr. Photo will need this space to work in.
- A CD-ROM drive to load Mr. Photo.
- Super VGA display card.

NOTE:

The Mr. Photo Gold software can only be used with JVC digital video cameras in conjunction with the JLIP Video Capture software.

Presto! PhotoAlbum helps you create electronic photo albums that keep your memories alive forever. Just drag-and-drop photos, frames, clip art, textures, and special effects. You can also personalize your albums with voice-overs and sound effects, then produce album slide shows to post to the Internet or send completed albums by e-mail.

Features

- Scan or import your photos from digital cameras and scanners.
- Auto colour correction for input photos.
- Drag-and-drop easy-editing operation.
- Photo Browser with thumbnail views of photos.
- Share albums with an Internet Browser.
- Library of over 500 pieces of clip art for decoration.
- Sound attachment with albums, pages and photos.
- Independent album playback support.
- Supports popular file formats: TIF, PCX, BMP, TGA, JPG, PCD, WMF, FPX, PNG, etc.

System Requirements

- An IBM PC 486, Pentium or compatible computer.
- A CD-ROM drive.
- A hard disk drive with at least 50 MB space available to hold and run the programme effectively.
- At least 16 MB of RAM (preferably 32 MB).
- MS Windows 95 or Windows NT 4.0.

Recommended System Requirements

- A sound card with a microphone.
- A colour printer.
- A network browser such as Internet Explorer 3.0 or Netscape Navigator 3.0, or later.

ImageFolio is a comprehensive multimedia image processing programme running under MS Windows 95 or Windows NT. It enables you to process in detail on your computer screen scanned images such as photographs, graphics and drawings, as well as images captured from video devices such as a VCR, a laser disc, a digital camera, a video capture box, etc.

You can create new images by using the powerful tools included in the software. Its sophisticated set of image editing tools enables you to quickly sketch an image canvas in order to create a new image, or to enhance pre-existing ones. With this software, your imagination is your only limit!

Features

Image Input

- Captures images from flatbed/hand scanner, digital camera, capture box, etc.
- Auto & Semi-auto image stitching for inputting large-sized images.
- Loading/saving images with various popular file formats such as TIF, PCX, BMP, TGA, JPG, PCD, WMF, PNG, etc.
- New Flash Pix format support.

Image Output

- Print colour-adjustment variations for examining the printing effect before actual printing.
- OLE 2.0 support for stand-alone editing mode.
- Easy artwork design for home page production and HTML applications.

Image Editing and Processing

- Multiple-layer single document for complicated object organization.
- Drag-and-drop floating images among documents (moving a selected area to new or other canvases).
- Precise colour selection by setting colour channels or choosing from a palette.
- Complete drawing and painting set of tools to work on images such as line, paint-brush, airbrush, colour gradation, eraser, zoom, text, eyedropper, free-hand rotate, hue/saturation brush, brightness/darkness brush, blur/sharpen brush, image hose, etc.
- Definable image hose tool for quick insertion of image set on canvas.
- Anti-alias feature with all graphic tools to enhance the drawing effect.
- Full selection tools for easy masking of irregularities in objects.
- Creating magic 3D effects with definable light source for selected objects with one touch.

- Generating object shadows in selectable light directions with one touch.
- Elegant templates provided for easy applications of daily-life photo usage.
- Image fine-tuning functions to adjust brightness, contrast, hue, saturation, tone distribution (equalization) and so on.
- Multiple filters to produce special effects such as smooth, sharpen, edge detection, emboss and mosaic.
- Effect browser providing previews in actual size of image, processed with all the fine-tuning functions and filters.
- 16- and 32- bit Adobe™ plug-in filter interface support.

System Requirements

The following hardware devices and software are required to run the software:

- An IBM PC 486, Pentium or compatible computer.
- One CD-ROM drive.
- One hard disk drive with at least 60 MB space available to hold and run the programme effectively.
- At least 8 MB of RAM (preferably 16 MB).
- MS Windows 95 or Windows NT.

To make fully efficient use of the programme, the following additional hardware and software elements are highly recommended:

- 50 MB or more of virtual memory.
- A colour printer supported by MS Windows 95.

Follow the steps below to install Mr. Photo, PhotoAlbum and ImageFolio.

1. Insert the programme CD into your CD-ROM drive.
2. Press the Start button and choose Run.
3. Type [drive]:\NewSoft\setup.exe and choose OK. The installation programme will automatically detect the language being used in the version of Windows you are running.
4. Follow the instructions on your screen as they appear.

JVC Support for:**U.K. & IRELAND****JVC (U.K.) Limited**

14 Priestley Way, London
NW2 7BA, United Kingdom

Tel : (0181) 450-3282
Fax : (0181) 452-2534

JVC IRELAND

(Branch of JVC(U.K.) Limited)
JVC HOUSE Carriglea Industrial Estate
Naas Road, Dublin 12, Republic of Ireland
Tel: (01)-460-2288 Fax: (01)-456-7522

DEUTSCHLAND**JVC DEUTSCHLAND GMBH**

Postfach 10 05 62, Grüner Weg 12, 61169
Friedberg/Hessen, Deutschland

Tel : (06031) 9390 Fax : (06031) 183 83

BELGIE/LUXEMBURG**JVC BELGIUM N.V.**

Klein Eilandstraat 3 - 1070 BRUSSEL, België
Tel : (02) 529 42 11 Fax : (02) 520 83 12

ESPAÑA**JVC ESPAÑA S.A.**

Ctra. Gracia Manresa Km. 14' 750 Edificio Can
Castanyer, 08190 Sant Cugat del Vallés, España
Tfno : (93) 565 32 16 Fax : (93) 565 32 18

ÖSTERREICH**JVC AUSTRIA GMBH**

Slamastrasse 43 A-1230, Wien, Austria
Tel : (0222) 610370 Fax : (0222) 610377

SVERIGE**JVC SVENSKA AB**

Veddestavägen 15, 175 62 Järfälla-Stockholm, Sweden
Tel : (08) 7950400 Fax : (08) 7950450

SCHWEIZ/SUISSE/SVIZZERA**SPITZER ELECTRONIC AG**

Mühlemattsstrasse 13 4104 Oberwil, Suisse
Tel : 061 405 1111 Fax : 061 402 0434

PORTUGAL**ORIELA, SA**

Campo de Santa Clara, 160-A, 1100, Lisboa, Portugal
Tel : 01 888 4731 Fax : 01 886 7871

FRANCE**JVC FRANCE S.A. DIVISION VIDEO**

102, boulevard Heloise,
95104 Argenteuil CEDEX, France
Tel : 01.39.96.33.33 Fax : 01.39.47.73.78

NEDERLAND**JVC NEDERLAND B.V.**

JVC Plein DE Heyderweg 2,
2314 XZ Leiden, Nederland
Tel : (071) 5453333 Fax : (071) 5894674

BELGIQUE/LUXEMBOURG**JVC BELGIUM S.A.**

Rue de la Petite Ile 3 -1070 BRUXELLES, Belgique
Tel : (02) 529 42 11 Fax : (02) 520 83 12

ITALIA**JVC ITALIA S.p.A.**

Via Cassanese 224 Palazzo Tiepolo, 20090
Segrate Milano Oltre, Italia
Tel : (02) 26.99.161 Fax : (02) 26.92.1820

DANMARK**JVC DANMARK A/S**

Helgeshøj Alle 30 DK-2630 Taastrup, Danmark
Tel : 43 50 90 00 Fax : 43 50 90 81

NORGE**JVC NORGE A/S**

P.O.BOX 2012, Postterminalen 3103 Tonsberg, Norge
Tel : 33 36 52 00 Fax : 33 36 52 99

SUOMI**OY HEDENGREN AB**

Mänkimiehentie 2 02780 Espoo, Finland
Tel : 9-68281 Fax : 9-810933

GREECE**ΗΛΕΚΤΡΟΒΙΟΜΗΧΑΝΙΚΗ ΕΛΛΑΣ Α.Ε.**

Πετριωτών 62, 183 46 Μοσχάτο, Αθήνα, Ελλάδα
Tel : 01-4832855 Fax : 01-4832557

For other countries, refer to the JVC Worldwide Service Network at <http://www.jvc-victor.co.jp/english/worldmap/index-e.html>.

NewSoft Support for:**North America (U.S.A)**

Technical Support Hotline:
Please e-mail: tech@newsoftinc.com or
call (510) 445-8616
www.newsoftinc.com

Europe**UK**

The Software Centre, East Way, East Mill
Industrial Estate, Ivybridge, Devon, PL21
9PE, UK
Tel: (44) 1752-201148
Fax: (44) 1752-894833

France

Info Trade Centre d'activités de l'Ourcq
45, rue Delizy 93692 Pantin, France
Tel: (33) 1-4810-7563
Fax: (33) 1-4810-7555

Asia/Pacific (Taiwan, R.O.C.)

9F, NO68, Sec. 3, Nankig E. Rd., Taipei,
Taiwan, R.O.C.
Tel: (886) 2-2517-0750
Fax: (886) 2-2517-0760
support@newsoft.com.tw
www.newsoft.com.tw

NOTICE FOR USERS

Use of this software is authorized according to the terms of the software licence.

When contacting the nearest JVC office or agency in your country about this software (refer to the JVC Worldwide Service Network at <http://www.jvc-victor.co.jp/english/worldmap/index-e.html>), please fill out the following and have the appropriate information ready.

Product Name		
Model		
Problem		
Error Message		
PC	Manufacturer	
	Model	<input type="checkbox"/> Desktop <input type="checkbox"/> Laptop
	CPU	
	OS	
	Memory	MB
	Available Hard Disk Space	MB

Please note that it may take some time to respond to your questions, depending on their subject matter.

JVC cannot answer questions regarding specifications or performance of provided NewSoft products, or basic operation of your PC.

